

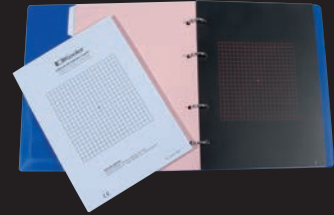
Sight testing & refraction equipment



Ophthalmoscopes & retinoscopes



Perimetry accessories



Tonometers & lenses



Orthoptic equipment



General equipment



HAAG-STREIT UK

UK Diagnostics Catalogue 2024

Look closer. See further.

CONTENTS

1. SIGHT TESTING & REFRACTION EQUIPMENT 4

| | |
|--------------------------------------|----|
| TEST TYPES & ACCESSORIES | 4 |
| VISION TESTS | 4 |
| NEAR VISION TESTS | 7 |
| OCCLUDERS & RULES | 9 |
| CROSS CYLINDERS & CONFIRMATION TESTS | 10 |
| TRIAL CASES & FRAMES | 11 |
| COLOUR TESTS | 12 |
| STEREOTESTS | 12 |

2. OPHTHALMOSCOPES & RETINOSCOPES 14

| | |
|--------------------------------------|----|
| WELCH ALLYN OPHTHALMOSCOPES | 14 |
| WELCH ALLYN RETINOSCOPES | 15 |
| WELCH ALLYN POWER SUPPLIES & HANDLES | 16 |

3. PERIMETRY ACCESSORIES 16

| | |
|------------------------|----|
| VISUAL FIELD EQUIPMENT | 16 |
|------------------------|----|

4. TONOMETERS & LENSES 17

| | |
|--|----|
| APPLANATION TONOMETERS | 17 |
| TONOMETER ACCESSORIES | 18 |
| TONOSAFE DISPOSABLE PRISMS | 18 |
| SLIT LAMP ACCESSORIES | 18 |
| CONTACT, ASPHERIC, LASER & INDIRECT LENSES | 19 |
| HAAG-STREIT LASER LENSES | 19 |
| CLEANING & DISINFECTING | 20 |

5. ORTHOPTIC EQUIPMENT 24

| | |
|-----------------------------|----|
| SYNOPTOPHORES & SLIDES | 24 |
| GENERAL ORTHOPTIC EQUIPMENT | 21 |
| STEREOGRAMS | 23 |
| PRISMS | 24 |
| OCCLUSION FOILS | 24 |

6. GENERAL EQUIPMENT 25

| | |
|--------------------------|----|
| TORCHES | 25 |
| CONTACT LENS ACCESSORIES | 25 |

1. SIGHT TESTING & REFRACTION EQUIPMENT

TEST TYPES & ACCESSORIES



Single Sided Test Types

A simple test type with an illuminated upper panel, which is interchangeable, with a spotlight in the lower panel. Available in direct or indirect format, with or without wall bracket. H:60cm W:21cm D:12cm

4107200 Free standing, direct

4107250 With wall bracket,
indirect/reverse



Ophthalmic Mirror

Mirrors with optical glass qualities
and distortion free.

4201001 Wall mirror — screws to wall. 54cm x 36cm

4202001 Wall bracket mirror —
suitable for awkward shaped rooms.
54cm x 36cm



Test Types & Panels

Upper panels are available for use in the rotating drum test types and single-sided test types. The charts with dual purpose letters are for use at both 6 metres and 3 metres with a mirror.

A wide selection of test types is available, in either plastic or laminated cardboard.

The 3 metre test types will fit easily into a briefcase for domiciliary use.

**For a full list of Test Types
& Panels, please visit
<https://hsuk.co/testtypes>**

VISION TESTS



Cardiff Acuity Test

The test is available in two versions. The standard version covers a range of visual acuity levels from 6/48 and 6/96 to 6/3.75 and 6/7.5 (at working distances of 1m and 50 cm). The Low Vision version, aimed at practitioners working in the field of visual impairment, covers 6/96 and 6/192 to 6/7.5 and 6/15, at the same working distances. Designed specially to test ages twelve months to three years.

1549006



Kay Letter Test

The Kay Letter Test is a linear letter acuity test comprising six of the Sloan letters used in the ETDRS study and is regarded as the International Standard. These six letters were chosen as being most suitable for testing younger children. The test displays five letters per acuity size (size 1.0 has 4 letters), as recommended by international standards.

4116144

VISION TESTS



Kay Picture Test, Linear Crowded

The Kay Picture Test Linear Crowded Book with distance LogMAR sizing at three metres from 0.70 to -0.20. It also includes a near testing and matching card. New, fully researched picture optotypes that provide a reliable visual acuity measurement comparable with ETDRS. The six pictures were shown to be the most recognisable to children under 30 months.

4116161



Kay Picture Test, Screening Book

The Kay Picture Test Screening Book is a compact A5 size book comprising an abridged single-crowded and linear-crowded picture vision testing option for vision screening. In addition, it comprises distance LogMAR sizing from 1.0 to -0.10 at three metres, plus it includes a single crowded near vision test card and a matching card.

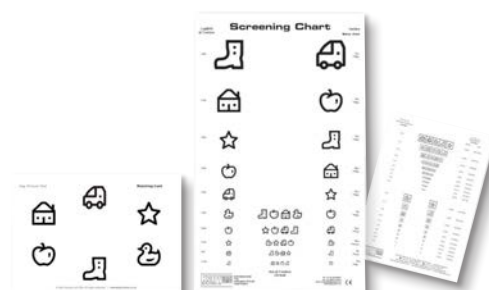
4116163



Kay Picture Test, Singles

The Kay Picture Test Single Crowded Book has comprehensive distance LogMAR sizing at three metres from 1.00 to -0.10. It also includes a near test at 33cm and a matching card. The test is suitable for naming and matching with children aged 18 months+. Instructions with diagrams and a scoring table are printed inside the book.

4116162



Kay Picture Test, Screening Chart

The Kay Picture Test Screening Chart is a double sided distance screening chart for vision testing at school entry, GP practices or other screening environments, without the child needing to know capital letters. This is a very quick and easy test process with single and line presentation at three metre test distance. The chart is suitable for children aged 4+.

4116164

VISION TESTS



LogMAR Charts

For 4 metre viewing. The arrangement of the letters on these revised charts is balanced so that the Sloan letters are represented at least once in every position. Can be used in an illuminated cabinet or as a wall hanging chart.

4302007 COHZV chart, for testing the right eye

4302008 ZRKDC chart, for testing the left eye

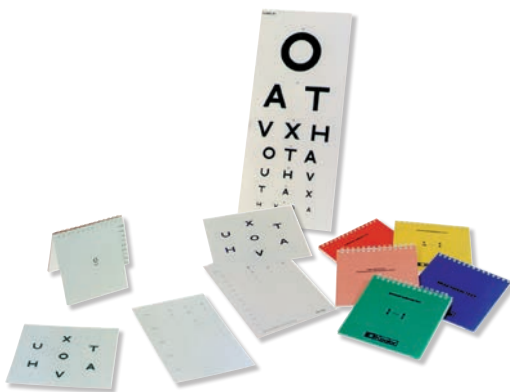
4302009 RNOVS chart, for refractions



Stand for Cabinet

For use with an illuminated cabinet. Includes castors, 2 locking. Allows for height adjustments from 114-125cm or 145-155cms for standing patients.

4302006



Sheridan Gardiner Test

Designed for use with young children, testing depends upon matching shapes rather than letter identification. Suitable for the visual assessment of the deaf-mute, educationally sub-normal children and patients who do not share the same language as the tester. A series of orthoptic booklets in washable plastic form is available, which supplements the basic set.

1549011 Sheridan Gardiner test, comprehensive set (standard test, flip over booklets red, green, yellow and blue, 6m wall hanging test type)

4116001 Sheridan Gardiner test, standard (key card and flip over book, one letter per page) to be used at 6 metres

4116002 Sheridan Gardiner flip over booklet green (6/6 - 6/3)

4116003 Sheridan Gardiner flip over booklet red (6/60 - 6/18)

4116004 Sheridan Gardiner flip over booklet yellow (6/18 - 6/6)

4116005 Sheridan Gardiner flip over booklet blue (near vision)



Slimline Illuminated Cabinet

For use with LogMAR charts listed above. Available wall hanging or with a separate stand. Convenient storage for 5 charts at the back of cabinet. Dimensions: 70 x 66 x 6.5cm (27.5 x 26 x 2.5"). (Chart not included.)

4302002

NEAR VISION TESTS



Vocational Near Vision Test Type

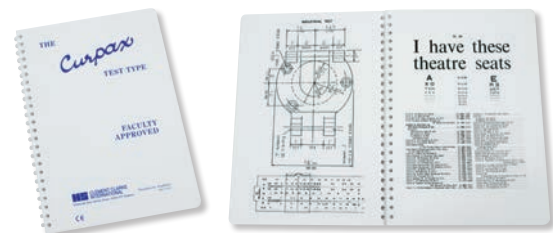
Provided in a spiral bound format, the test is printed in conformity with the requirements of the Faculty of Ophthalmologists. The pages include text of N5, N6, N8, N10, N12, N14, N18, N24, N36, N48 corresponding to 5,6,8pt.etc. Times Roman type face. A 1:17 reduced Snellen and Ridley type, music, typewritten copy, street map, stock market and soccer league table are included.

4117001

Thomas the Tank Engine Reading Test Type

Designed especially for young children. Conforms to the recommendations of the Faculty of Ophthalmologists.

1549017



Maclure Test Type

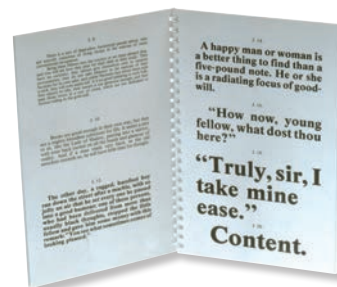
An ideal test for young children, which is designed to differentiate between their ability to see and their ability to read. The test is based upon the Ladybird Keywords reading scheme using school script, which is a simplified type written without serifs. It helps the child to gradually appreciate the link between handwriting and print and to make the transition to the Times Roman serif style. (White cover).

4118001

Curpax Near Vision Test Type

Based on the recommendations of the Faculty of Ophthalmologists. Text is provided with the range N5 to N48 with a reduced Snellen test type, an industrial test, a stock market report, a phone directory, a sheet music extract and a numeral test.

4117051



Maclure Bar Reading Test

Using the same philosophy as the Maclure reading test type, this version is suitable for performing bar reading exercises. (Red cover).

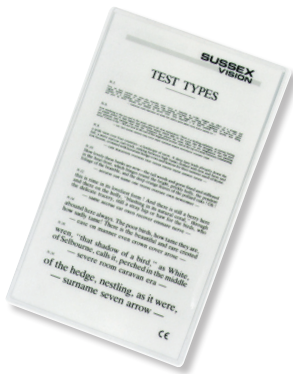
7315001

Jaeger Reading Test Type

A booklet viewed at 35cm with text from J1 to J20.

1549104

NEAR VISION TESTS



Laminated Test Type

A simple double sided reading test type ranging from N4 to N48 as approved by the Faculty of Ophthalmologists and incorporating their requirements. Being laminated, it is washable and durable.

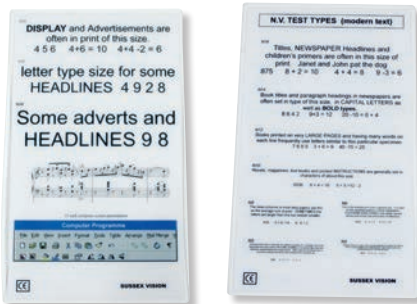
1646012



Eustace Pinhole Occluder

A Lorgnette style occluder with five pinholes in one half. Reversible for use over either eye. Also incorporates pupillary distance rule and fixation point.

4364001



Laminated Test Type

With modern text and computer screen presentation.

1646011



Spielmann Occluder

An opaque occluder on handle for cover testing. Being opaque, eye movements of the occluded eye can be monitored during the test.

1561010

OCCLUDERS & RULES



Romanes Occluder

This simple all purpose occluder is a useful trial case accessory and may also be used for a simple assessment of visual acuity and the cover test. One side of the occluder bears a scale graduated in millimetres for interpupillary distance measurements and for numerical assessment of proptosis. The maker's name and address is printed in Times Roman lettering and may be used as a near vision test.

4363001



Black/Green Silk Eye Patch

A simple washable, durable eye patch with elasticated band, for use wherever patching may be required (pack of 10)

0120300

OCCLUDERS & RULES



Opticlude Eye Patches

An adhesive eye patch used whenever occlusion therapy is required. The virtually non-irritant adhesive leaves no residue on removal. Available for adults and children.

1771010 Pack of 20 Opticlude occluders, junior

1771011 Pack of 20 Opticlude occluders, adult



Eye Occluder Set

This eye occluder set is ideal for both perimetry and visual field testing, (pack of 2).

1802349S



Headspring Occluder

An effective accessory for use with visual field devices, screens and other tests where occlusion of one eye is required.

5203001



Key Occluding Spectacles for Children

Test unocular vision using the occluding glasses. The bright neon colours make them fun to wear and easy to remember.

4116130 Regular

4116134 Infant

4116143 Junior

EXOPHTHALMOMETERS



Luedde Exophthalmometer

A clear perspex bar about 1cm square x 10cm long is shaped with a notch at one end and is graduated in cm and mm for measurement of eye protrusion.

1561320



Mirror Exophthalmometers

These superior and inferior orbital rim-based instruments measure the position of the globe accurately even after lateral orbitotomy, e.g. post tumour removal or thyroid decompression. Easy-to-use, fast reproducible results and comfortable for the patient.

1605020 According to Hertel

1605025 According to Naugle

CROSS CYLINDERS & CONFIRMATION TESTS



Cross Cylinders

A useful confirmation test for examining astigmatism, comprising full aperture lenses with markings indicating the power and mounted on nickel silver knurled handles.

Available in the following powers;

4361002 ± 0.25 dioptre **4361004** ± 0.75 dioptre

4361003 ± 0.50 dioptre



Confirmation Tests

Glass lenses mounted in a metal frame, available in the following powers; ± 0.25 , 0.50 , 0.75 and 1.00 dioptre as 2 lens, 3 lens and 4 lens.

6221020 2 lens ± 0.25 **6221050** 3 lens straight ± 0.25

6221051 3 lens straight ± 0.50 **6221040** 4 lens ± 0.25

6221041 4 lens ± 0.50 **6221043** 4 lens ± 1.00

RETINOSCOPY RACKS



Pair of Retinoscopy Racks

Ultra light-weight moulded lens racks made from high grade optical quality plastic. Sphere lens power range, ± 0.5 , 1, 1.5, 2, 2.5, 3, 3.5, 4, 5, 6, 7, 8, 9, 10, 12, 15 dioptres. To avoid scratching, the lenses are deeply embedded in the frame and are supplied in a soft plastic case.

1561030

TRIAL CASES & FRAMES



Trial Lens Set

Contains 218 reduced aperture lenses and 7 accessories, in case. International colour convention, metal rims (anodised aluminium). Cylinders do not have handles.

128 Spheres in 64 pairs:

Convex: 0.12 , 0.25 — 4.00 in 0.25 dioptre steps, 4.00 — 6.00 in 0.50 dioptre steps, 6.00 — 14 in 1.00 dioptre steps, 14.00 — 20.00 in 2.00 dioptre steps

Concave: 0.12 , 0.25 — 4.00 in 0.25 dioptre steps, 5.00 , 5.50 , 6.00 — 14.00 in 1.00 dioptre steps, 16.00 , 18.00 , 20.00

80 Cylinders in 40 pairs:

Convex: 0.12 , 0.25 — 3.50 in 0.25 dioptre steps, 4.00 , 5.00 , 6.00

Concave: 0.25 — 3.50 in 0.25 dioptre steps, 4.00 , 5.00 , 6.00
10 Prisms $1/2$, 1, 2, 3, 4, 5, 6, 7, 10, 12

7 Accessories: 1 Maddox Rod, 1 red glass, 1 green glass, 1 stenopaic slit, 1 pinhole disc, 2 blank discs

4304001

TRIAL FRAMES



Oculus Universal Trial Frame

Constructed from lightweight metal alloy and high-quality plastic. Accommodates up to five 38mm lenses for each eye. Independent screw adjustments for PD of 48 to 80mm. Screw operated bridge height and projection. Corneal distance scale. Sides adjustable for length and angle.

4505001



Oculus Universal UB-4 Trial Frame

As per Oculus Universal Trial Frame, but made from robust, high-quality plastic.

4505100 Oculus Universal UB-4 Trial Frame

4505105 Polarising filters for Oculus UB-4 trial frame



Oculus Half Eye Trial Frame

Made from high-grade plastic and light metal alloy, this drop cell trial frame can accommodate up to three 38mm lenses for each eye. Adjustable PD of 59 to 67mm. Sides adjustable for length. Available with fixed bridge or adjustable nosepiece.

4506001 Half eye trial frame without nosepiece, adult

4506010 Half eye trial frame with nosepiece, adult



Oculus Children's Trial Frame

As Half Eye Trial Frame with PD of 54 to 58mm. Available with fixed bridge or adjustable nosepiece.

4506030 Half eye trial frame without nosepiece, child

4506035 Half eye trial frame with nosepiece, child



Halberg Trial Clips

Useful and effective monocular trial frame which may be used with almost all types of spectacle frames. Incorporates three cells for 38mm trial lenses and accessories. Ideal for low vision testing. (Supplied in pairs).

1549050

COLOUR TESTS



City University Colour Vision Test, Edition 3

A rapid diagnostic test for detecting red/green and blue/yellow and classifying red/green (protan/deutan) and blue/yellow (tritan) defects (inherited and acquired). Enables an assessment of the degrees of any defect. Quick and simple to use and suitable also for children over five years. Different saturations provide varying degrees of sensitivity to detect even mild defects, if required. A good test indicating likely occupational suitability for colour tasks.

1549101 City University Colour Vision Test, Edition 3

1549107 Pack of charts for City University Colour Vision Test, Edition 3

STEREOTESTS



Frisby Pocket Stereotest

A new screening test for stereopsis, suitable for patients with limited ability to understand instruction. Does not require red/green or polarised glasses.

7308003



Lang Stereotest I-R

The Lang Stereotest I-R is a revised version of the Lang stereotest, for diagnosing and screening for disorders of stereopsis. It has improved optical and print quality and contains 3 random dot stereo objects with different disparities.

7307035

STEREOTESTS



Frisby Stereotest

Three square transparent plates (6mm, 3mm, 1.5mm) have four similar patterns printed, three on one surface and one on the other, hence one appears in relief as closer or nearer. The patient indicates which square stands out in space from the others.

Viewed at 40cm, glasses are not required. Assessment of stereo acuity from 600 to 15 seconds of arc.

7308001



Wirt Fly Test

Consists of three stereoscopic tests employing polarised vectographs. The fly dramatically demonstrates the presence of stereo vision. The other two tests provide the practitioner with results to estimate the level of stereoscopic vision. Viewed at 40cm.

7306001

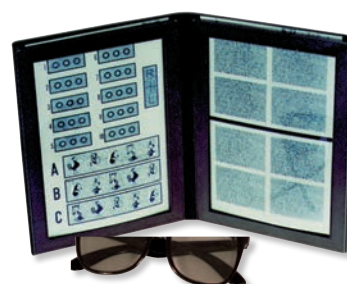


Polarised Glasses

Polarised glasses for use with Wirt, Random Dot and Randot tests.

7306101 Standard (Black frames)

7306105 Paediatric (Orange frames)



Randot Stereotest

Patterns or shapes are presented to the two eyes using polaroid spectacles provided. One figure stands out in space and has to be identified. Includes animal pictures viewed at 40cm.

7307001



Random Dot E Stereotest

This test consists of three cards and a pair of polarised spectacles. One card is a specimen and shows what the patient should see when using the spectacles and presented with the stereoscopic card. The third card is a blank to expose malingers.

7307002

2. OPHTHALMOSCOPES & RETINOSCOPES

WELCH ALLYN OPHTHALMOSCOPES

The Welch Allyn LED bulb is guaranteed for 7 years and uses a fraction of the power of traditional bulbs, extending the on-time of your battery handle. Update your existing PanOptic or Prestige by purchasing an LED lamp.



3.5V Coaxial Ophthalmoscope Head

Has all the Prestige features, except the Coaxial Ophthalmoscope has 28 lenses, -25 to +40.

1717003 Coaxial Ophthalmoscope, head only (Ref: 11720)



Pocket Plus LED Ophthalmoscope

Combined function and style to provide maximum performance and durability in a compact design. Choose from three colours; Mulberry (Purple), Blackberry (Black) and Snowberry (White). The Pocket Plus Ophthalmoscope boasts many exciting features;

- Dioptre range of -20 to +20
- Optional neutral density filters
- 7 apertures: microspot, small spot, large spot, slit aperture, fixation aperture, cobalt blue and red-free
- SureColour LED bulbs - rated for 20,000 years of use.

1717455 - Snowberry

1717450 - Blackberry

WELCH ALLYN RETINOSCOPES



3.5V Streak/Spot Retinoscopes

Features:

- Interchangeable: streak retinoscope can be converted to a spot.
- Continuously rotating external focusing sleeve is easy to grip and manipulate regardless of hand size
- Brighter Halogen light and more efficient optics allow easier viewing of retinal reflexes
- Sealed housing keeps instrument dust-free longer
- Crossed linear polarising filter eliminates glare from trial lenses
- Magnetic fixation cards make dynamic retinoscopy easy to perform
- Converts streak to spot retinoscope by simply changing the bulb
- Rubber brow rest prevents scratching of glasses.

1717300 3.5V Streak retinoscope, head only (Ref: 18200)

1717044 3.5V Spot retinoscope, head only (Ref: 18300)

1717170 Streak bulb (Ref: 08200)

1717171 Spot bulb (Ref: 08300)

WELCH ALLYN POWER SUPPLIES & HANDLES



3.5V SMART Power Handle

The 'SMART' Lithium Ion battery provides twice the on-time and is just half the weight of a rechargeable battery. Ergonomic design, made from durable CYCOLOY®. The 'SMART' handle has low battery and charging indicators, does not suffer from memory loss when charging and has a more environmentally friendly battery.

1717292 3.5V SMART power handle, charger and transformer (Ref: 71904)

1717293 SMART power handle only (Ref: 71910)

1717294 Charging pod (Ref: 71940)

1717028 Transformer (Ref: 71034)



Universal Double Desk Charger

Double desk charger for both SMART handles (black lithium ion) and the original double desk charger handles (NiCad).

1717296 Double desk charger, without handles (Ref: 71114)

1717298 Double desk charger, with 2 SMART handles (Ref: 71734)

3. PERIMETRY ACCESSORIES

VISUAL FIELD EQUIPMENT



Amsler Chart Manual

A valuable series of charts for evaluating foveal and macular disorders. The manual explains uses and the interpretation of results. Recording charts supplied.

1549105 Amsler Chart Manual

1549106 Amsler recording charts, pad of 50

4. TONOMETERS & LENSES

APPLANATION TONOMETERS



Goldmann Model AT 900M/Q Tonometer

The standard for the measurement of intraocular pressure between 0 to 78mm Hg. As the area of applanation is only 3.042mm, the scleral rigidity does not influence readings. The Model T Tonometer attaches to the footplate of the slit lamp and is removed from the slit lamp when not in use. Fits the Haag-Streit BM, BMV, BQ, BP slit lamps. (Previously T-type removable)

5811030

Goldmann Model AT 900 Tonometers

The standard for the measurement of intraocular pressure between 0 to 78mm Hg. As the area of applanation is only 3.042mm, the scleral rigidity does not influence readings. The Model R Tonometer is permanently attached to the slit lamp by means of a special mounting spigot.

5810010 Goldmann Model AT 900 C/M for BM, BMV slit lamps (previously R/BM)

5812011 Goldmann Model AT 900 BQ tonometer for BP,BQ slit lamps (previously R/BQ)

5812013 Goldmann Model AT 900 C/M tonometer for BC,BD 900 slit lamps (previously R/BC)

5814001 Doubling Prism for Goldmann (black band)



Goldmann Model AT 870 for Zeiss slit lamps

The AT 870 is mounted permanently on top of the slit lamp microscope. The feeler arm protrudes from above into the beam path of the microscope and illumination unit. If the feeler arm is swivelled into the park position, the slit lamp can be used immediately for the examination. The applanated surface is observed monocularly through the left eyepiece of the stereo microscope.

5810100 Goldmann Model AT 870 for Zeiss slit lamps

TONOMETRY ACCESSORIES



Fluo 900 Fluorescein strips

Sterile, individually wrapped ophthalmic strips which are impregnated with fluorescein dye. Used for evaluating contact lens fitting.

7220592



Sterilising Stand

A simple tripod sterilising stand to take up to three doubling prisms.

5814002

TONOSAFE DISPOSABLE PRISMS



Tonosafe Disposable Prisms

The Tonosafe disposable prisms are a convenient and effective method of reducing the risk of cross infection between patients, eliminating the need to clean and disinfect prisms.

Tonosafe is compatible with both Goldmann and Perkins tonometers. (Box of 100 with five prism holders per box.)

5805100 Box of 100 prisms

5805084 Black Tonosafe prism holder

SLIT LAMP ACCESSORIES



Haag-Streit Slit lamp breath shields

A large breath shield for the Haag-Streit BQ 900, BP 900 and BI 900 model slit lamps.

The breath shield is easy to install and covers a wide area of the slit lamp, while providing access to the main features of the device. The special angled shape of the shield and the cut-outs for the arms allow comfortable working.

7221001 BQ 900 breath shield

7221002 BP 900 breath shield

7221003 BI 900 breath shield

CONTACT, ASPHERIC, LASER & INDIRECT LENSES



Goldmann Fundus Contact Lens (901)

For binocular slit observation of the pupil, the macula, its surroundings out to 30° as well as the central vitreous body sections. Easy to use, lightweight glass provides a direct image.

5702006



Goldmann Single Mirror Gonioscopy Contact Lens (902)

For the examination of the anatomical conditions in the area of the front of the iris. 902s (scleral) lens also available. 62° mirror angle.

5702007



Original Goldmann 3 Mirror Contact Lens (903)

11mm internal diameter of the cornea part. Best in combination with Haag-Streit slit lamps. For examination of the entire fundus, the vitreous and the iridocorneal angle. Made of acrylic glass. 59/66/73 degree mirror angles.

5702009 Large (903) classic Goldmann glass

5702010 Small 903s classic Goldmann glass



Two Mirror Contact Lens (905)

Two mirrored surfaces, which each incline at an angle of 62° towards the front surface, have been cut into the 17mm long glass cone. This makes it possible to examine the opposite iridocorneal angle without turning the contact glass. 905s (scleral) lens also available.

5702008



Volk Lenses

A full range of powers for every diagnostic and therapeutic application.

Volk classic lenses;

1549905 - 60D

1549902 - 78D

1549120 - 90D

1549906 - 20D

1549948 - Superfield NC lens

Volk BIO lenses;

1549086 - 28D non-contact

1549908 - 30D non-contact (30mm)

1549158 - 30D non-contact (43mm)

Volk Pan Retinal lens

1549915



Goldmann Three Mirror Laser Lenses

The Classic Goldmann Lens. Made from acrylic with lumenised-coated protective glass. Designed to work with argon/YAG lasers. All lenses have the original mirror angles by Goldmann: 59/66/73 degrees. 903L.

5702080



Volk Cleaning Cloths

Volk precision optical lens cleaner consists of a highly absorbent, lint-free optical towlette moistened to an exact saturation level, with a unique combination of oil removers and cleaning agents. Ideal for use on Volk lenses, microscope eyepieces, cameras and other precision optical surfaces. (Box of 24).

1549900

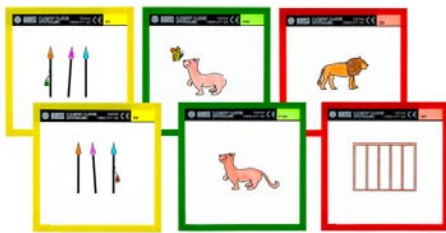
5. ORTHOPTIC EQUIPMENT

SYNOPTOPHORES SLIDES



Synoptophore Slides

- Series A, Maddox test
- Series D, stereoscopic vision
- Series F, fusion
- Series G, simultaneous perception
- Series H, simultaneous perception
- Mayou series of eight slides
- Series S, special purpose slides



Synoptophore Slide Sets

- 6411001** Set of twelve pairs for Model 2001 (D3/4, D55/56, D59/60, D71/72, F9/10, F99/100, F155/156, F201/202, G3/4, G13/14, G27/28, G59/60)
- 6411002** Set of twelve pairs for Model 2002/3 (D5/6, D51/52, D61/62, D71/72, F31/32, F71/72, F81/82, F177/178, G15/16, G47/48, G55/56, G65/66)
- 6413002** Set of eight Mayou slides
- 6414005** Set of Braddick Random Dot graded stereo slides

GENERAL ORTHOPTIC EQUIPMENT



Children's Fixation Bar

An ideal orthoptic aid specifically designed to aid children's fixation during the prism and cover test and other orthoptic assessments. It has attractive coloured objects on one side and two reduced test types and a passage of N5 reading type on the reverse.

7004001 Original Budgie/policeman fixation stick

7004002 Pirate/Dog fixation stick

7004003 Fish/Dog fixation stick

7004004 Fairy/Cat fixation stick



Lang Fixation Bar

A white bar with brightly coloured pictures of varying sizes on one side and a near vision test on the reverse. Designed primarily to attract and hold attention during examinations.

7004011

GENERAL ORTHOPTIC EQUIPMENT



Kay Fixation Stick

These colourful sticks are ideal for keeping a child's attention during cover tests. Each stick contains pictures and letters.

4116120 single fixation stick

4116121B pack of 3



Lang Fixation Cube

Cube mounted on holder with brightly coloured pictures on five faces of the cube. Designed to attract attention during examination.

7004010 Lang cube no.1 (White handle)

7004012 Lang cube no.2 (Red handle)



Franceschetti Maddox Rod

The large diameter combined with a long handle facilitates examination of muscle balance. Twirling in the same manner as the cross allows the horizontal and vertical phorias to be checked in quick succession.

4365001



Bagolini Lorgnette

Similar to the Bagolini striated lenses but is presented in a convenient lorgnette format.

7207005

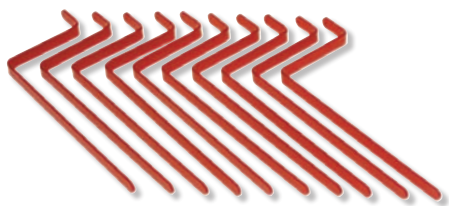
GENERAL ORTHOPTIC EQUIPMENT



Bagolini Red Filter Bar

The Bagolini Filter Bar is used to investigate the depth of suppression in patients with amblyopia up to the age of 7 years. This instrument consists of a series of red filters of increasing density from very pale to very dark. This decreases the illumination in front of the fixating eye to induce fixation with the deviating eye and therefore diplopia.

1549223



Thumb Bar Readers

Used for exercising binocular vision at home or school. It is held against the centre of the page of reading material. Sold in packs of 10. (Red.)

7313010

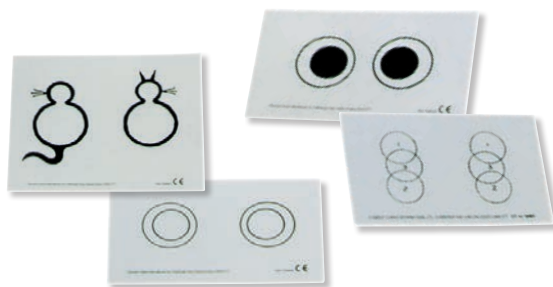


Near Point Dot Card

Card to measure the near point of convergence and for home exercises. Range is from 6cm to 24cm. Sold in packs of 50.

4116110

STEREOGRAMS



Stereograms

These are printed on thin card and are suitable to give to patients for home training purposes. Fusion and stereoscopic.

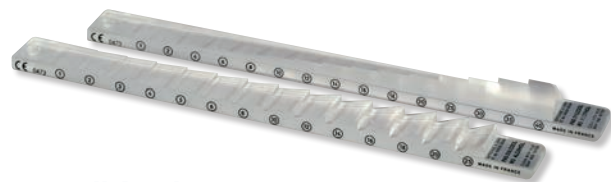
7309001 Cat

7309002 Open bucket

7309003 Closed bucket

7309005 1-2-3

PRISMS



Solid Prism Bars

Similar to prism bars, but manufactured in a solid, one piece, bar of plastic.

Power range as follows:

Horizontal; 1, 2, 4, 6, 8, 10, 12, 14, 16, 18, 20, 25, 30, 35, 40 Δ , plus an additional loose 45 Δ prism

Vertical; 1, 2, 3, 4, 5, 6, 8, 10, 12, 14, 16, 18, 20, 25 Δ , plus an additional 30 Δ loose prism. Available as individual bars or as a pair in a case.

1561380 Pair of horizontal and vertical solid prism bars

7108101 Horizontal prism bar only

7108201 Vertical prism bar only

PRISMS



Plastic Prisms

Universal or square plastic prisms are useful for a number of orthoptic and ophthalmic test procedures. Available in various set sizes and as single plastic prisms.

For a full list of Plastic Prisms, please visit
<https://hsuk.co/looseprisms>



Fresnel Prisms

Consist of very thin plastic membranes measuring only 1mm thick utilising the Fresnel principle of tiny lens and prism segments. May be cut to fit most frame sizes and shapes and are simply attached to the existing spectacle lenses. The membranes can be cut into small segments when bi-focal lenses are affected. Light weight and cosmetically superior to glass especially when high powers are required.

Available in a range of powers; 1, 2, 3, 4, 5, 6, 7, 8, 9, 10, 12, 15, 20, 25, 30, 35, 40Δ

For a full list of Fresnel Prisms, please visit
<https://hsuk.co/fresnelprisms>

OCCLUSION FOILS



Bangerter

A system of graded foils to equalise the spatial contrast of the dominant to that of the amblyopic eye.

7103990 1.0 Bangerter Graded Occlusion Foil (visual acuity ~6/6 or 20/20)

7103991 0.8 Bangerter Graded Occlusion Foil (visual acuity ~6/7.5 or 20/25)

7103992 0.6 Bangerter Graded Occlusion Foil (visual acuity ~6/9 or 20/30)

7103993 0.4 Bangerter Graded Occlusion Foil (visual acuity ~6/15 or 20/50)

7103994 0.3 Bangerter Graded Occlusion Foil (visual acuity ~6/21 or 20/70)

7103995 0.2 Bangerter Graded Occlusion Foil (visual acuity ~6/30 or 20/100)

7103996 0.1 Bangerter Graded Occlusion Foil (visual acuity ~6/60 or 20/200)

7103997 <0.1 Bangerter Graded Occlusion Foil (visual acuity <6/90 or 20/300)

7103998 Light Perception Bangerter Foil

7103999 00 Bangerter Foil

6. GENERAL EQUIPMENT



Professional Penlite

For quick and effective evaluation of the pupillary reflex. Robust, attractive penlight with matte black finish using high intensity halogen light for true tissue colour rendition and long lasting consistent illumination. Durable solid brass construction. Uses 2 x AA batteries.

1717158



Reusable Pen Torch

Black pen torch for corneal reflections, pupil assessment and extra-ocular motility testing. Use 2 x AA batteries (included). Operates by twisting body of torch.

1424001



Disposable Pen Torch

Uses 2 x AA batteries (included). Operates by pressing clip to contact. (Supplied in packs of 6).

7614050

CONTACT LENS ACCESSORIES



Schirmer Tear Test

Useful for determining total lachrymal secretion and provides useful information prior to the fitting of contact lenses. (50 pairs of individually sterile tests in each box).

4701001

Index

A

| | |
|------------------------|----|
| Amsler Chart Manual | 16 |
| Applanation Tonometers | 17 |
| Aspheric Lenses | 19 |

B

| | |
|---------------------------|----|
| Bagolini Lorgnette | 22 |
| Bagnolini Filter Bar | 23 |
| Bangerter Occlusion Foils | 24 |
| Bar Reading Books | 7 |

C

| | |
|------------------------------|----|
| Colour Tests | 12 |
| Confirmation Tests | 10 |
| Cross Cylinders | 10 |
| Curpax Near Vision Test Type | 7 |

D

| | |
|-----------------------------|----|
| Disposable Pen Torches | 25 |
| Disposable Tonometer Prisms | 18 |
| Distance Vision Tests | 4 |
| Dot Cards | 23 |

E

| | |
|--------------------------|---|
| Eustace Pinhole Occluder | 8 |
| Exophthalmometers | 9 |
| Eye Patches | 8 |

F

| | |
|---------------------------|----|
| Fixation Sticks/Bar/Cube | 21 |
| Fluo 900 | 18 |
| Fly Stereotest | 13 |
| Franceschetti Maddox Rod | 21 |
| Fresnel Lenses and Prisms | 24 |
| Frisby Stereotest | 12 |

G

| | |
|--------------------------------|----|
| Goldmann Applanation Tonometer | 17 |
| Goldmann Contact Lenses | 19 |
| Goldmann Laser lenses | 19 |

H

| | |
|----------------------------|----|
| Halberg Trial Clips | 11 |
| Haag-Streit Contact Lenses | 20 |

I

| | |
|--|---|
| Illuminated Cabinets for LogMAR Charts | 6 |
|--|---|

J

| | |
|--------------------------|---|
| Jaeger Reading Test Type | 7 |
|--------------------------|---|

K

| | |
|--------------------|----|
| Kay Fixation Stick | 22 |
| Kay Picture Tests | 5 |

L

| | |
|-----------------------------------|----|
| Laminated Test Type (near vision) | 8 |
| Lang Fixation Bar | 22 |
| Lang Fixation Cube | 22 |
| Lenses, Contact | 19 |
| Lens Cleaning Cloths | 20 |
| Lens Sets | 10 |
| LogMAR Charts | 6 |

M

| | |
|--------------------|---|
| Maclure Test Types | 7 |
|--------------------|---|

N

| | |
|-------------------|---|
| Near Vision Tests | 7 |
|-------------------|---|

O

| | |
|---------------------|----|
| Occluders and Rules | 8 |
| Occlusion Foils | 24 |
| Occluding Glasses | 9 |
| Oculus Trial Frames | 11 |
| Ophthalmic Mirrors | 4 |
| Ophthalmoscopes | 14 |

P

| | |
|-------------------|----|
| Pen Torches | 25 |
| Pinhole Occluder | 8 |
| Polarised glasses | 13 |
| Prism Bars | 23 |
| Prisms | 24 |

R

| | |
|------------------------------|----|
| Randot Pre-School Stereotest | 13 |
| Retinoscopes | 14 |
| Retinoscopy Racks | 10 |
| Romanes Occluder | 8 |

S

| | |
|---------------------------|----|
| Schirmer Tear Test | 27 |
| Sheridan Gardiner Tests | 6 |
| Single Sided Test Types | 4 |
| Snellen Charts | 4 |
| Spielmann Opaque Occluder | 8 |
| Stereograms | 25 |
| Stereotests | 12 |
| Synoptophore Slides | 21 |
| Slit Lamp Accessories | 19 |

T

| | |
|----------------------------|----|
| Test Types & Accessories | 4 |
| Thumb Bar Readers | 23 |
| Tonometers | 17 |
| Tonosafe Disposable Prisms | 18 |
| Torches | 25 |
| Trial Clips | 11 |
| Trial Lens Cases | 10 |
| Trial Frames | 11 |

U

| | |
|----------------------|---|
| Upper Snellen Panels | 4 |
|----------------------|---|

V

| | |
|------------------------|----|
| Visual Field Equipment | 16 |
| Vocational Test Type | 7 |
| Volk Lenses | 19 |

W

| | |
|--|----|
| Wall Hanging Snellen Charts | 4 |
| Welch Allyn Ophthalmoscopes | 14 |
| Welch Allyn Professional Penlite (torch) | 25 |
| Welch Allyn Retinoscopes | 14 |

HAAG-STREIT UK

Unit C
Woodside Industrial Estate
Dunmow Road
Bishop's Stortford
Hertfordshire
CM23 5RG

Phone (01279) 456261
info.unitedkingdom@haag-streit.com
www.haagstreituk.com