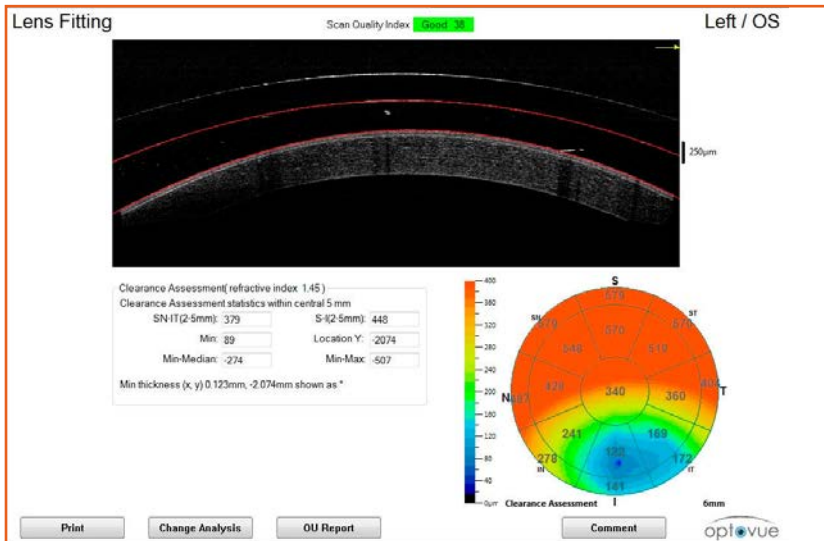


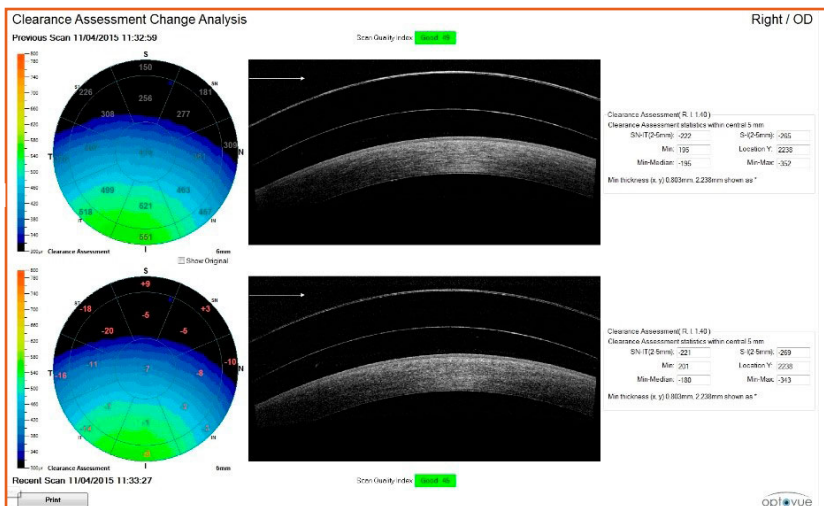
optovue Introducing Vault Mapping

Vault Mapping enables precise visualization of the lens-to-eye relationship for specialty lens fitting. Similar to the pachymetry scan, the iVue/iFusion and iScan OCT systems map the space between the scleral lens and the cornea, providing an accurate clearance measurement.



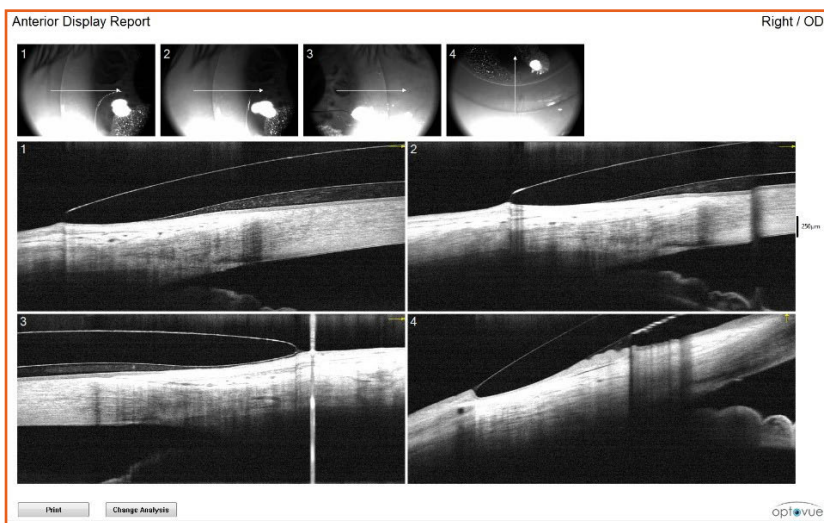
VAULT MAP

Visualize and quantify central corneal clearance.



CHANGE MAP

Evaluate clearance change resulting from lens settling between scans.



ANTERIOR DISPLAY

Evaluate superior, temporal, inferior and nasal landing zones.